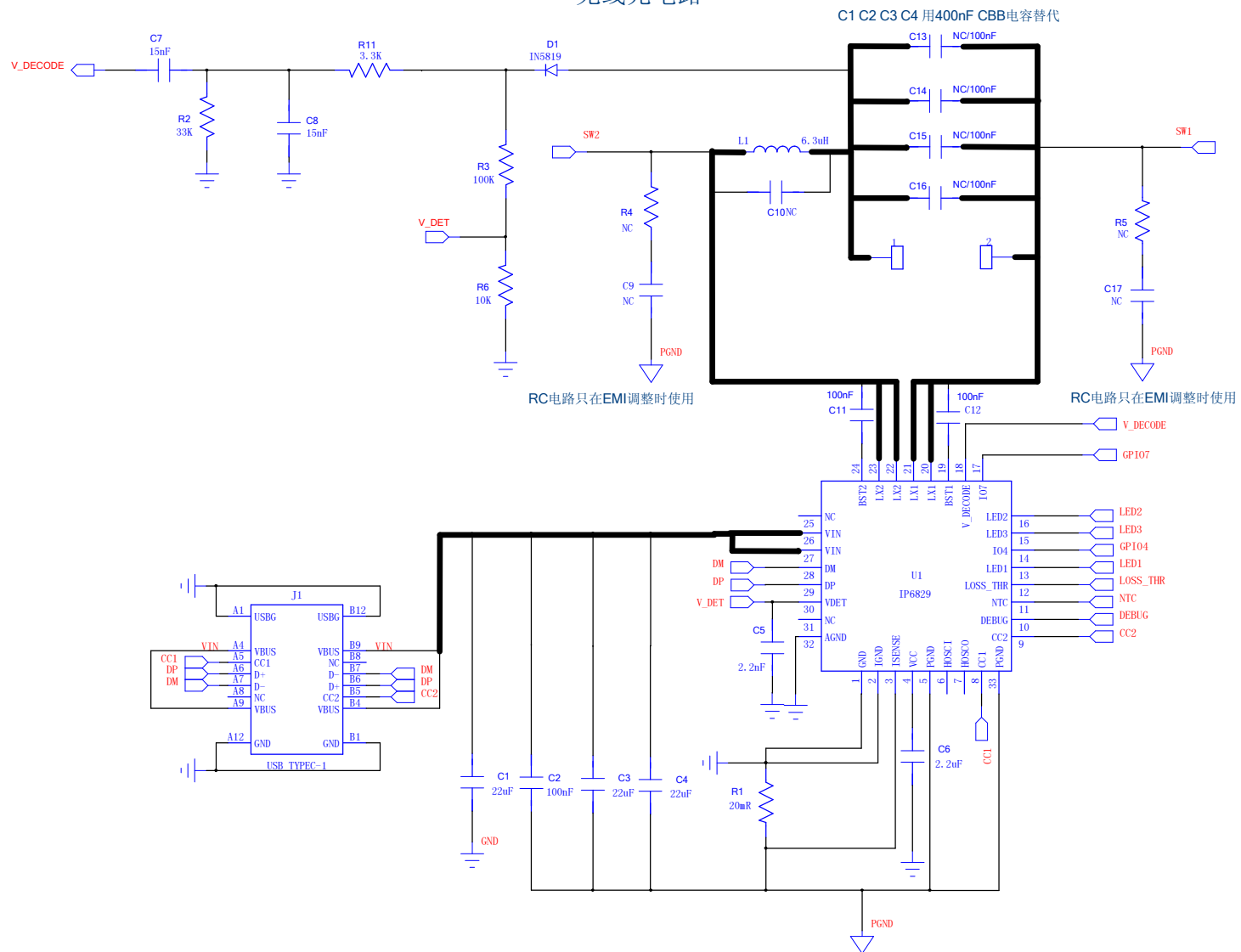
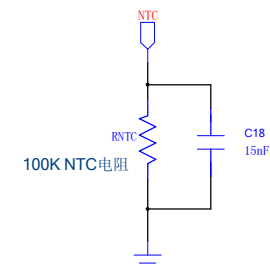


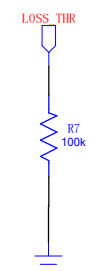
无线充电电路



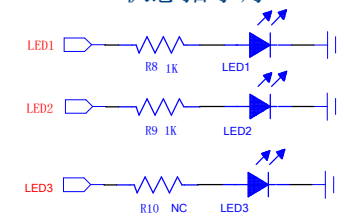
NTC模块



FOD参数调整模块

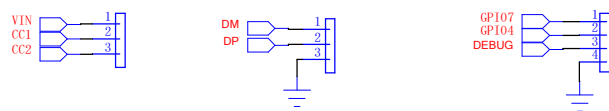


状态指示灯



默认只使用LED1和LED2

接口测试电路



英集芯科技
INJOINIC TECHNOLOGY

TITLE: IP6829_DEMO_V1.00

DRAWN:	IT360	DATED:	2022/06/08
--------	-------	--------	------------