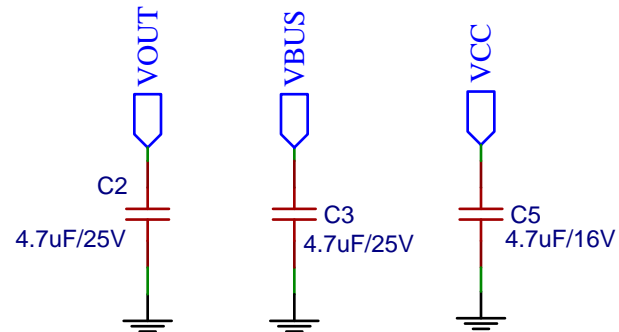
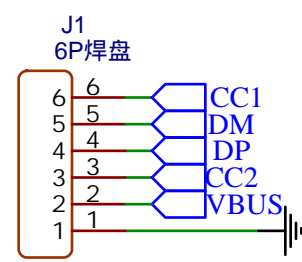
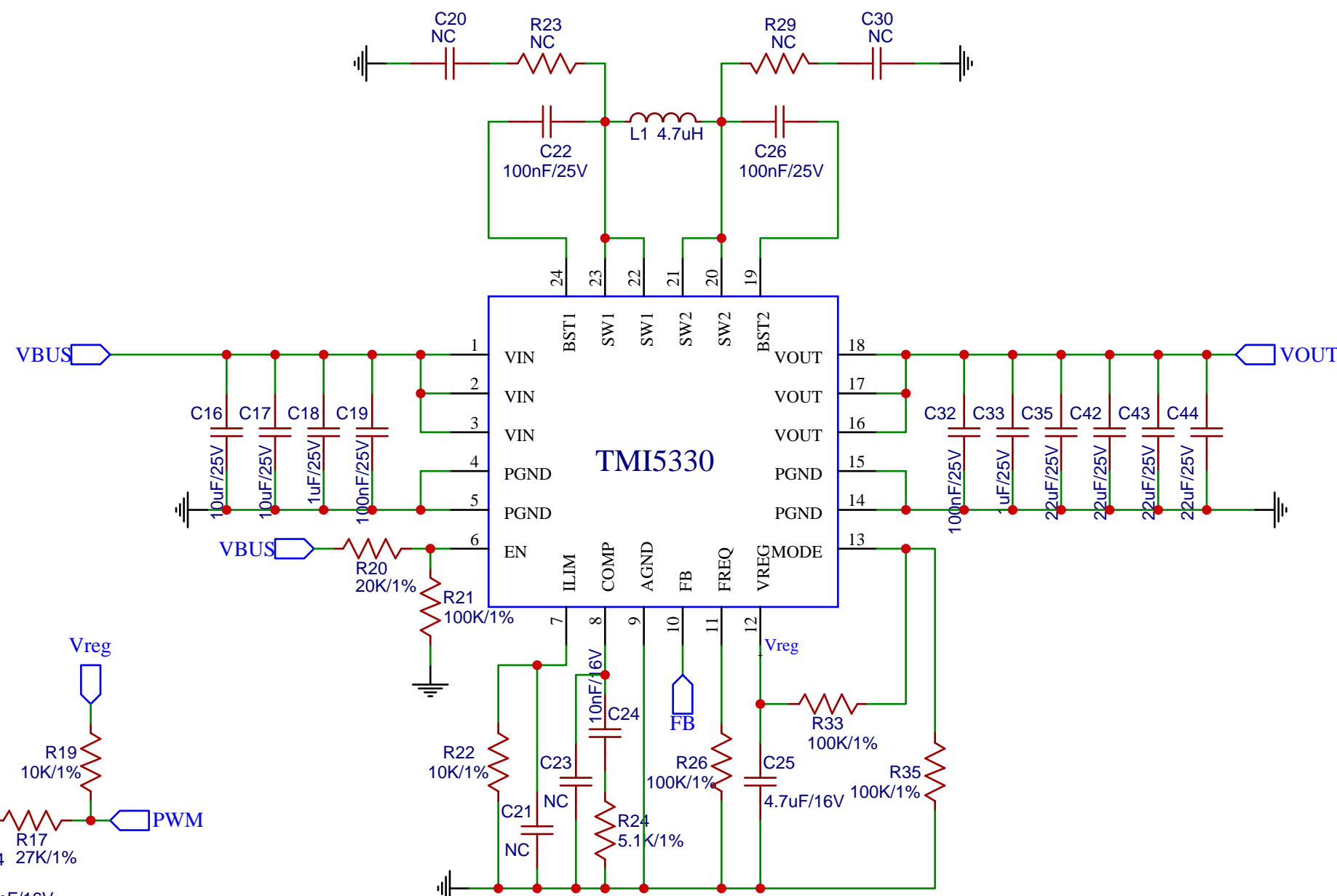
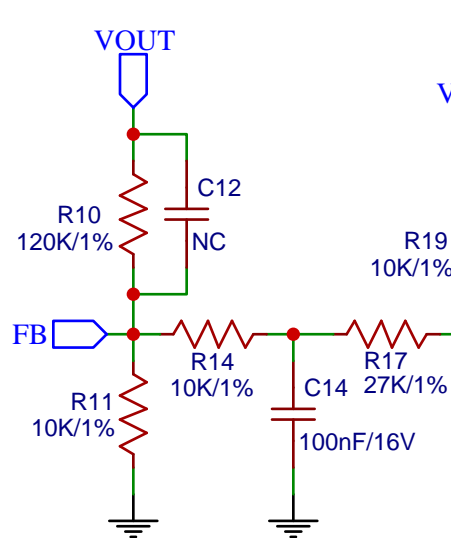


## 输入接口



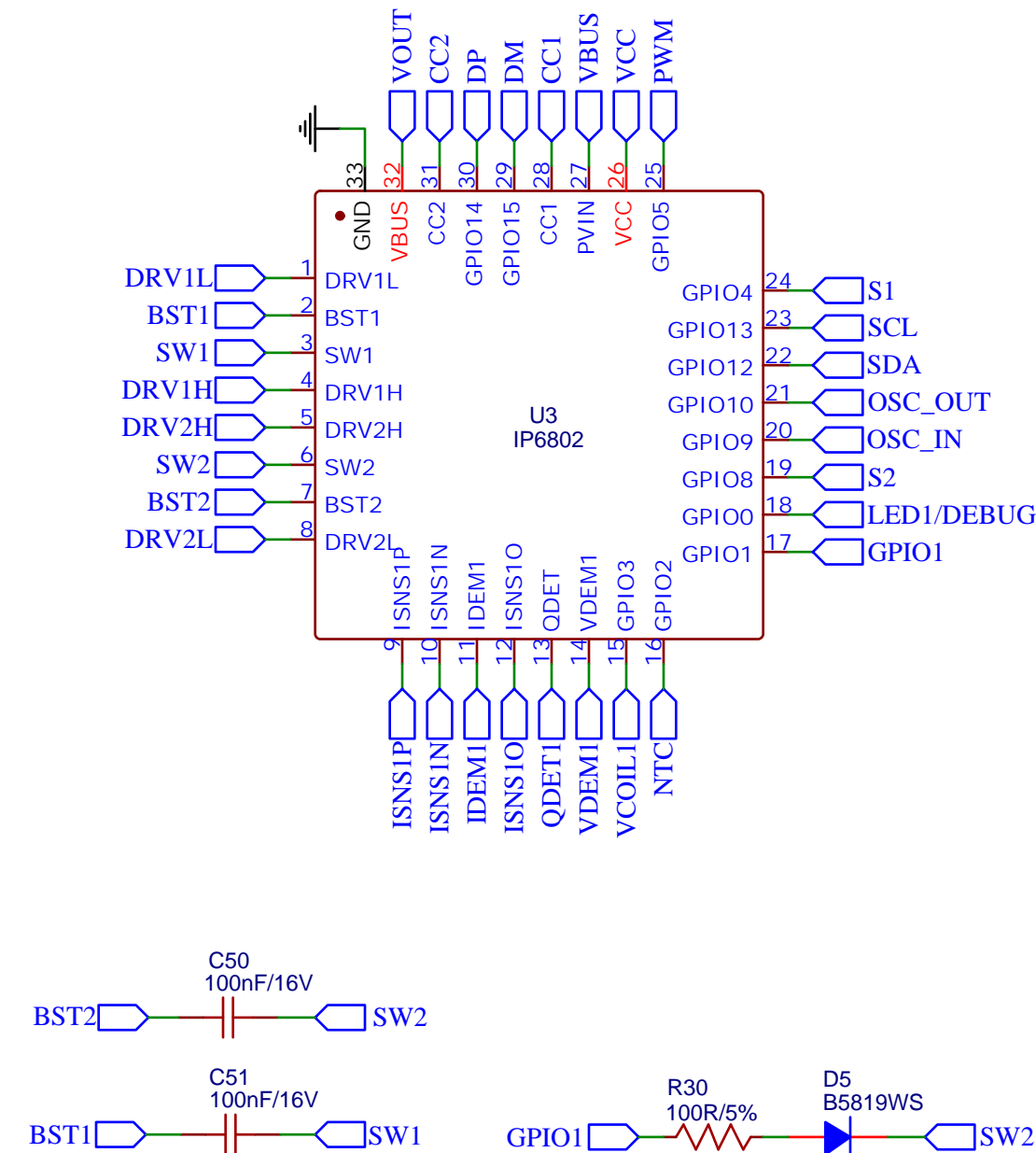
输入小电容靠近IC放置

## BUCK-BOOST

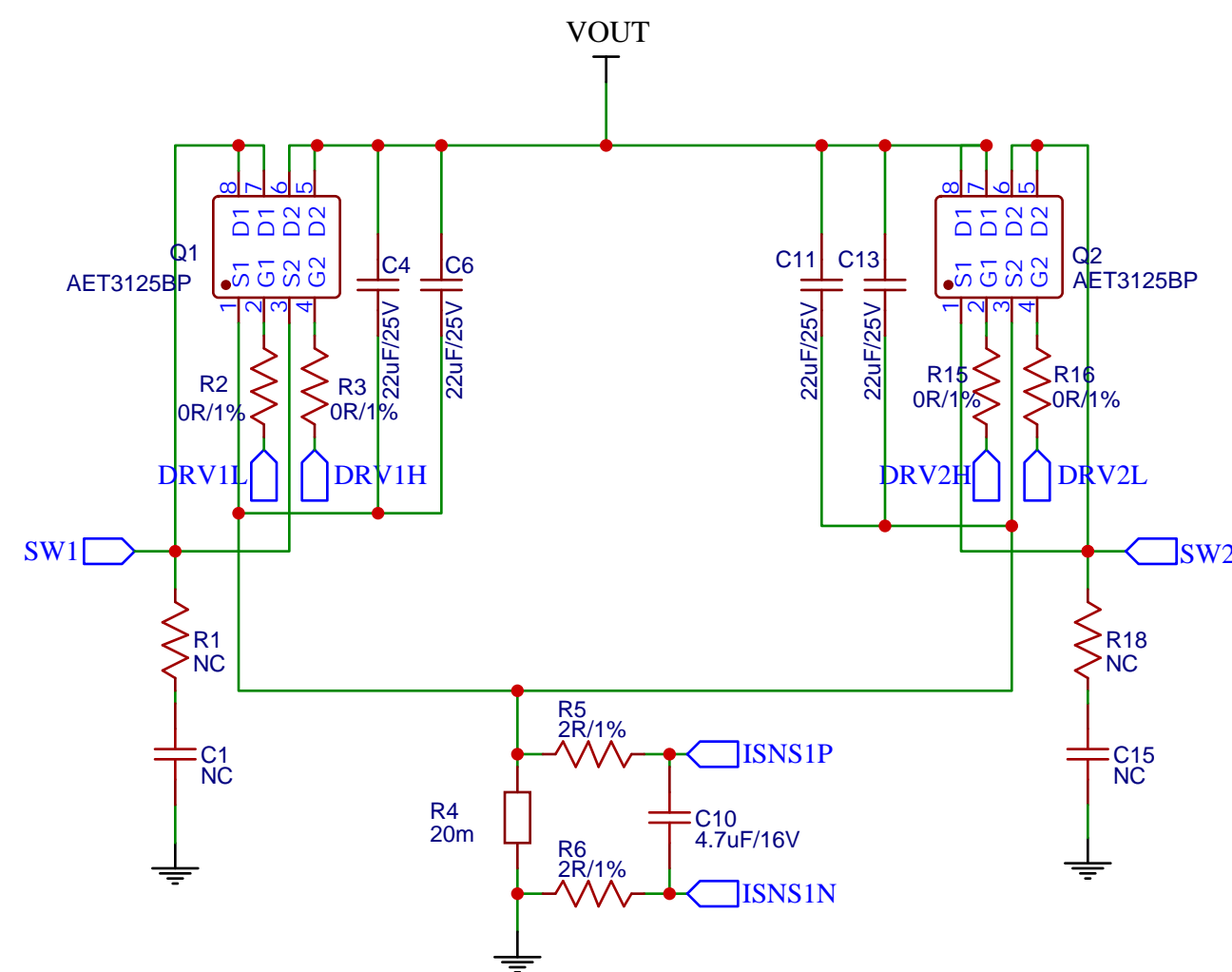


## 主控IC

## VBUS和VOUT分别采样

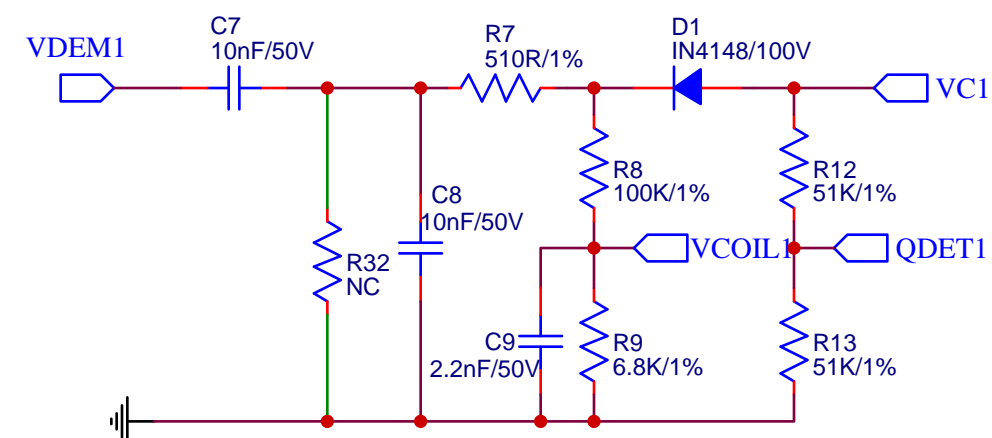


## H桥控制电路



R5\R6\C10靠近芯片放置  
走线避开功率部分和MOS管

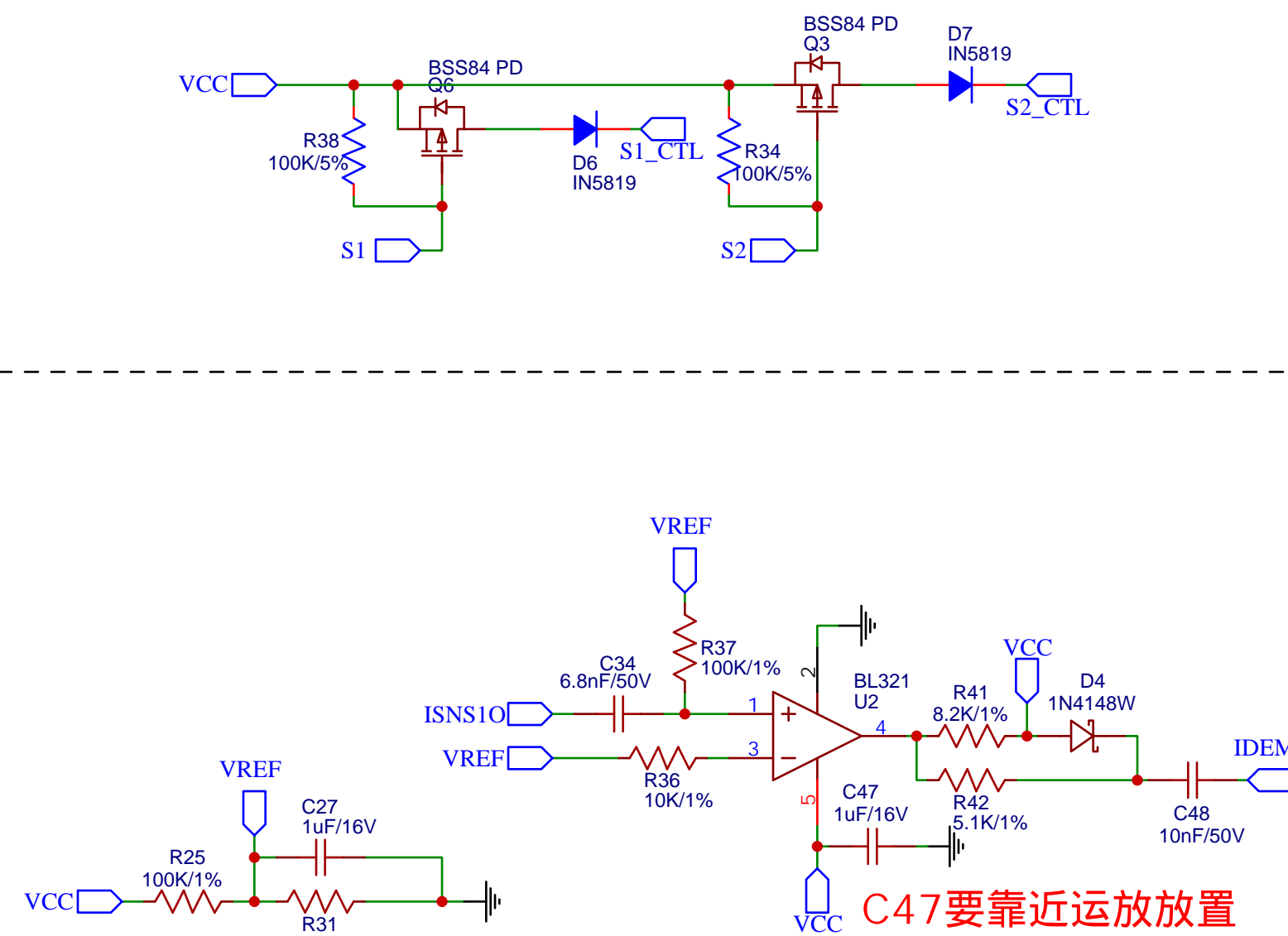
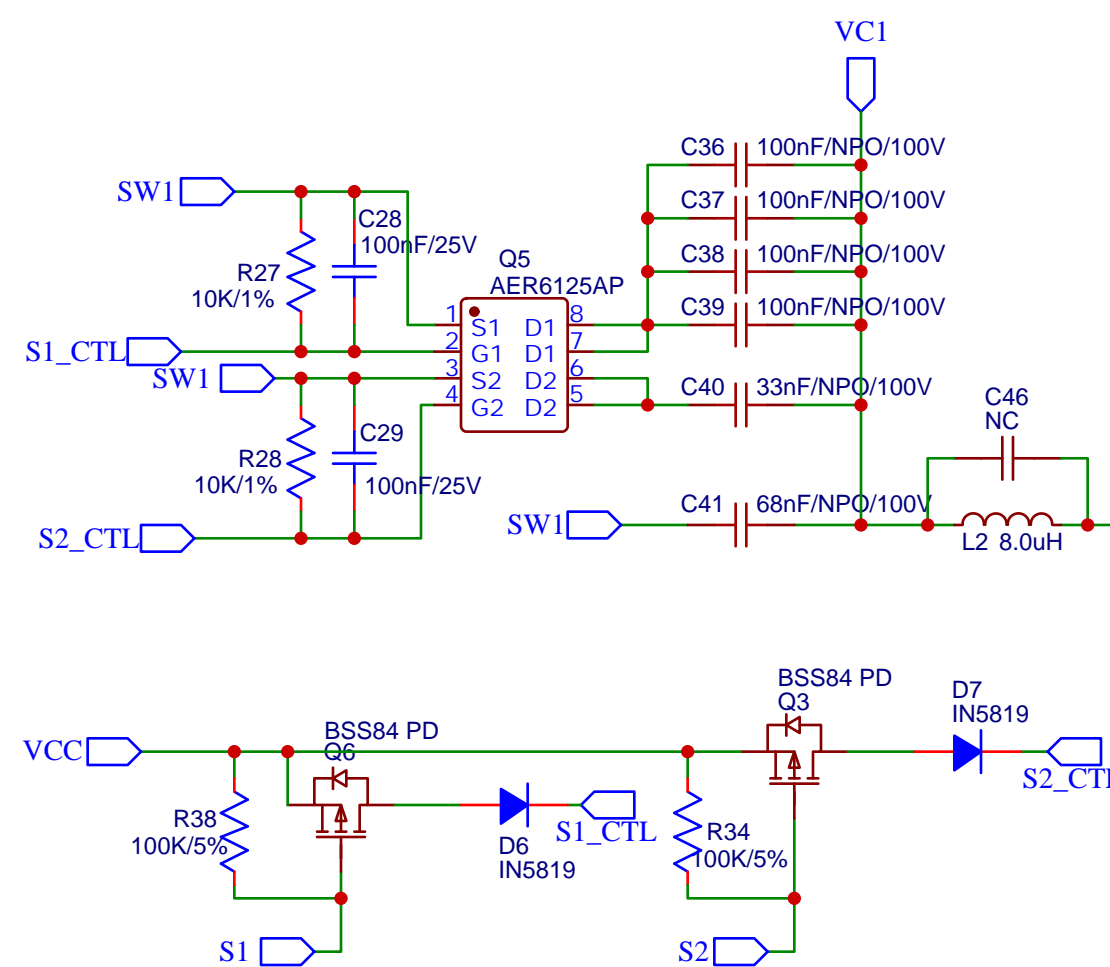
## 电压解码



### 走线远离功率部分或包地处理

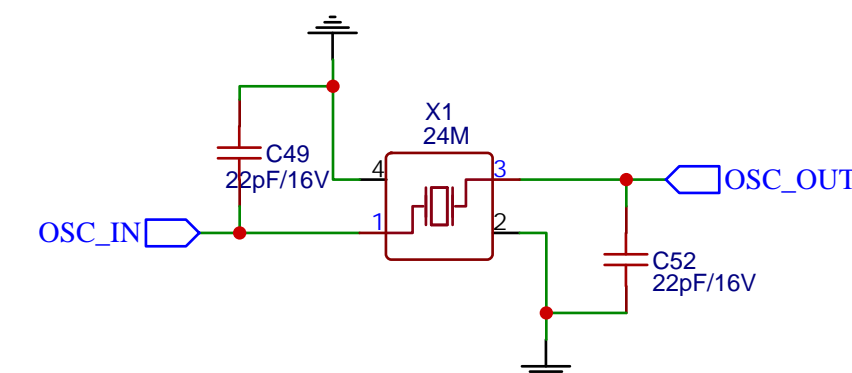
## MPP切换电路

- 1、路径切换MOS(Q5)需用60V以上耐压MOS
- 2、线圈表面到外壳表面距离需要在0.9mm-1.1mm之间



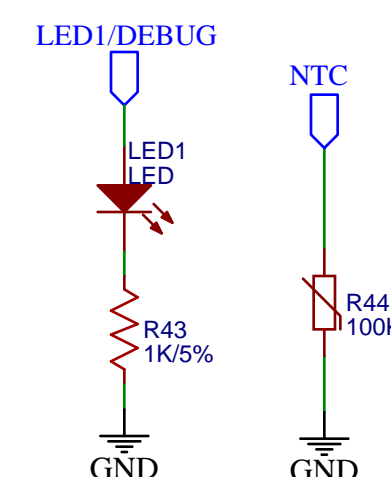
C47要靠近运放放置

24M 无源晶振

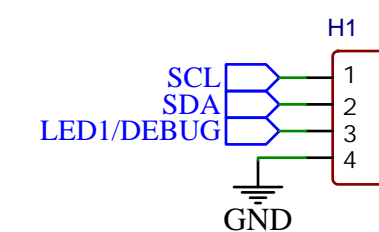


### 电容靠近晶振放置

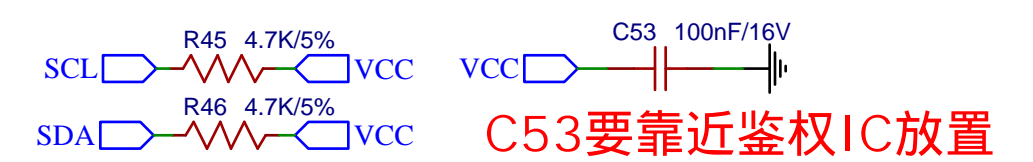
## LED灯显电路



## DEBUG接口

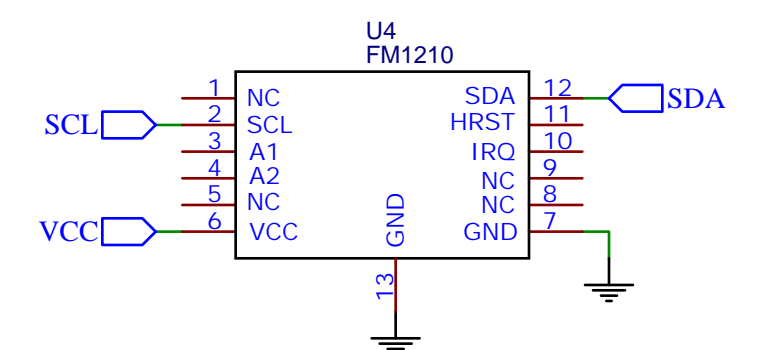


## Q12.2加密IC 二选一



### C53要靠近鉴权IC放置

复旦微加密IC



## 紫光同芯加密IC

